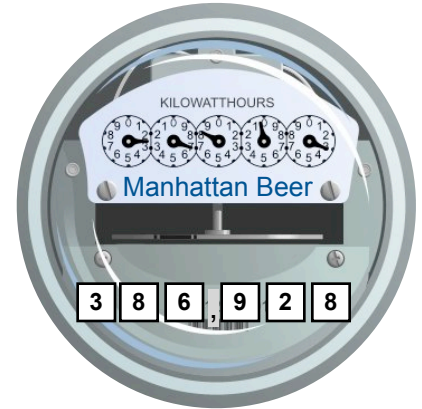




Lighting System Upgrade



kWh Reduction



Project Specifics and Results

The lighting system in this newly acquired building consisted of over (200) 400 watt metal halide fixtures. Manhattan Beer, realizing these fixtures were very inefficient, was in need of an energy efficient replacement solution.

T8 fluorescent high bay fixtures, 179 of them, were utilized to replace the existing obsolete fixtures. Not only were the number of fixtures reduce but the new fixtures were also provided with motion sensors that automatically reduce the fixtures from 6 lamps on down to 2 lamps on when no motion was detected in a specific area. This further increased the facilities energy savings and prolonged the lamp life of the fixtures.

With multiple facility locations throughout the NYC area Manhattan Beer stands to substantially reduce its operational costs just by removing old inefficient light fixtures.

State rebate incentives through NYSERDA covered 50% of the turnkey project cost.

Environmental Facts

Equivalent to: (annually)

- 580,392 lbs. less CO2 emissions
- 30,295 Gallons of oil not burned
- 59 cars taken off the road
- 870 new trees planted

Project Facts

- Energy Savings \$77,386
- Energy Reduction 68%
- Project Payback 8.9 months



www.aboutenergysolutions.com